



# TLC 2D PROFILING SOFTWARE

Running on Pocket PC2003

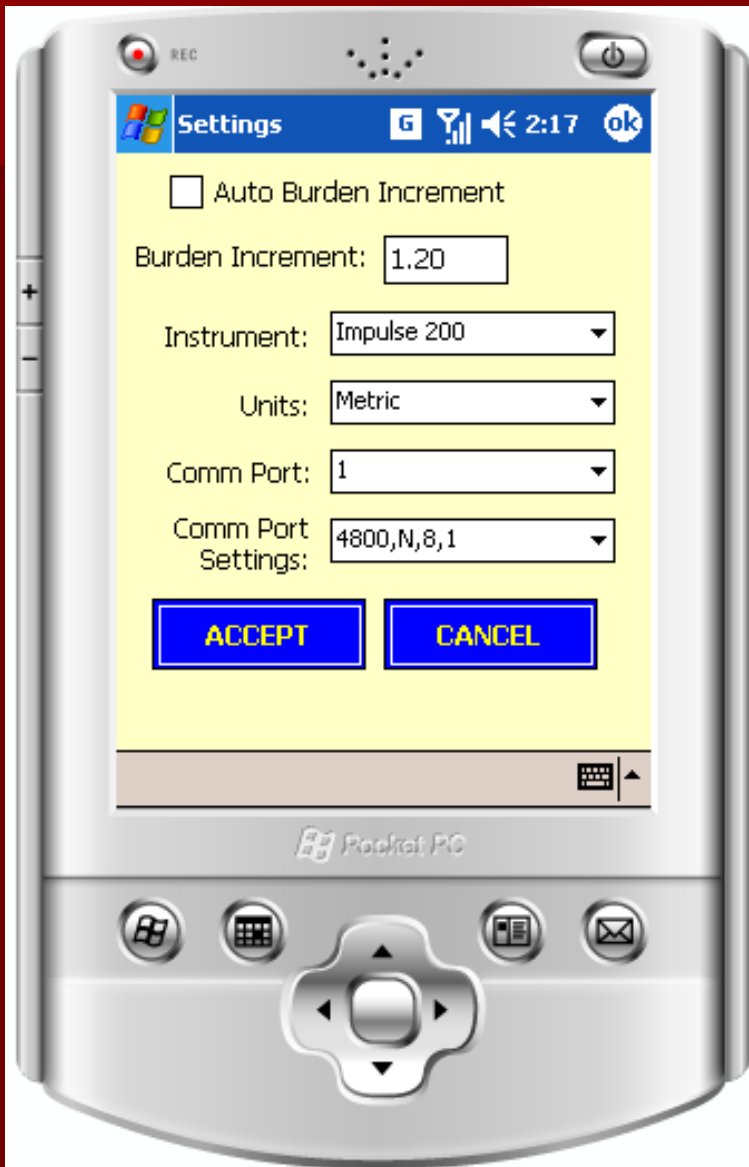
Windows Mobile 5

Windows CE Devices

# TLC2D PROFILE APPLICATION – MAIN SCREEN

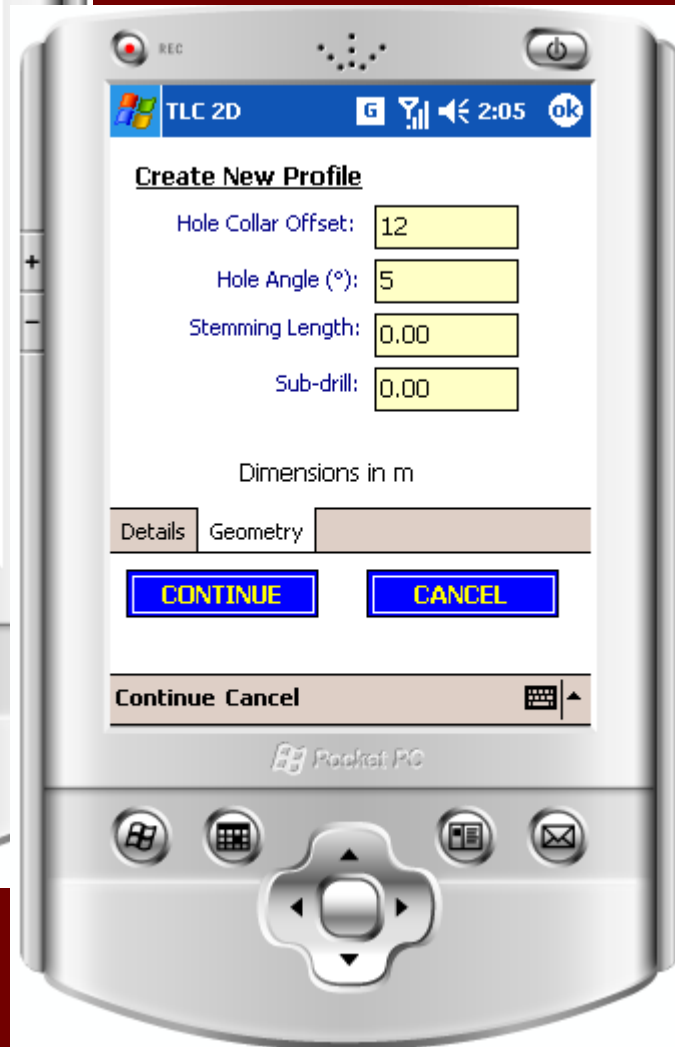
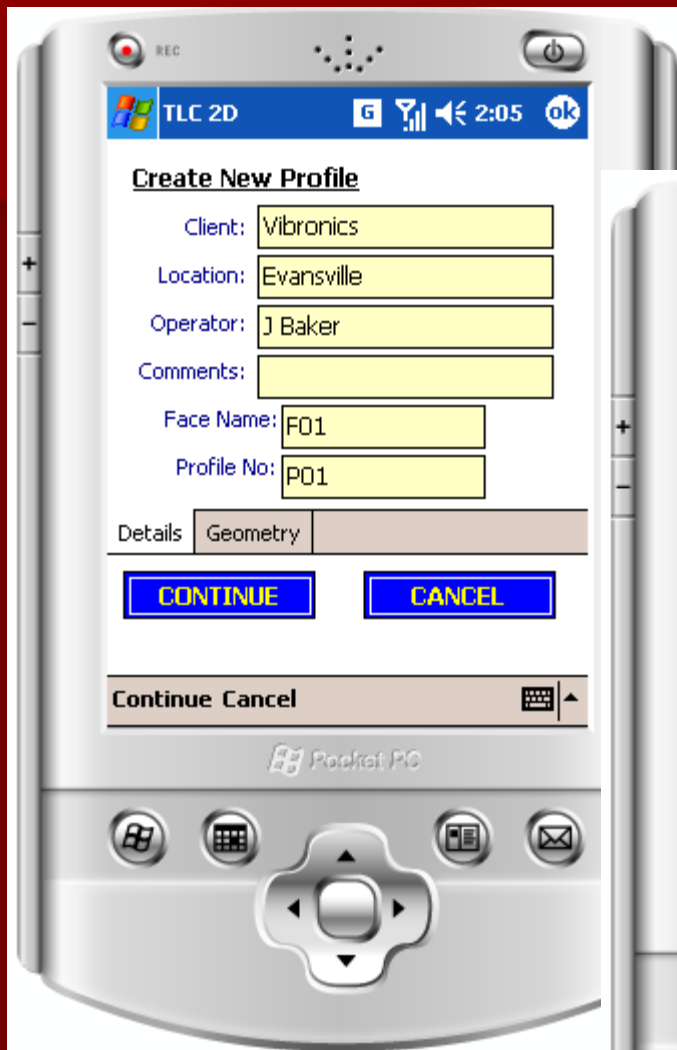


# Settings...



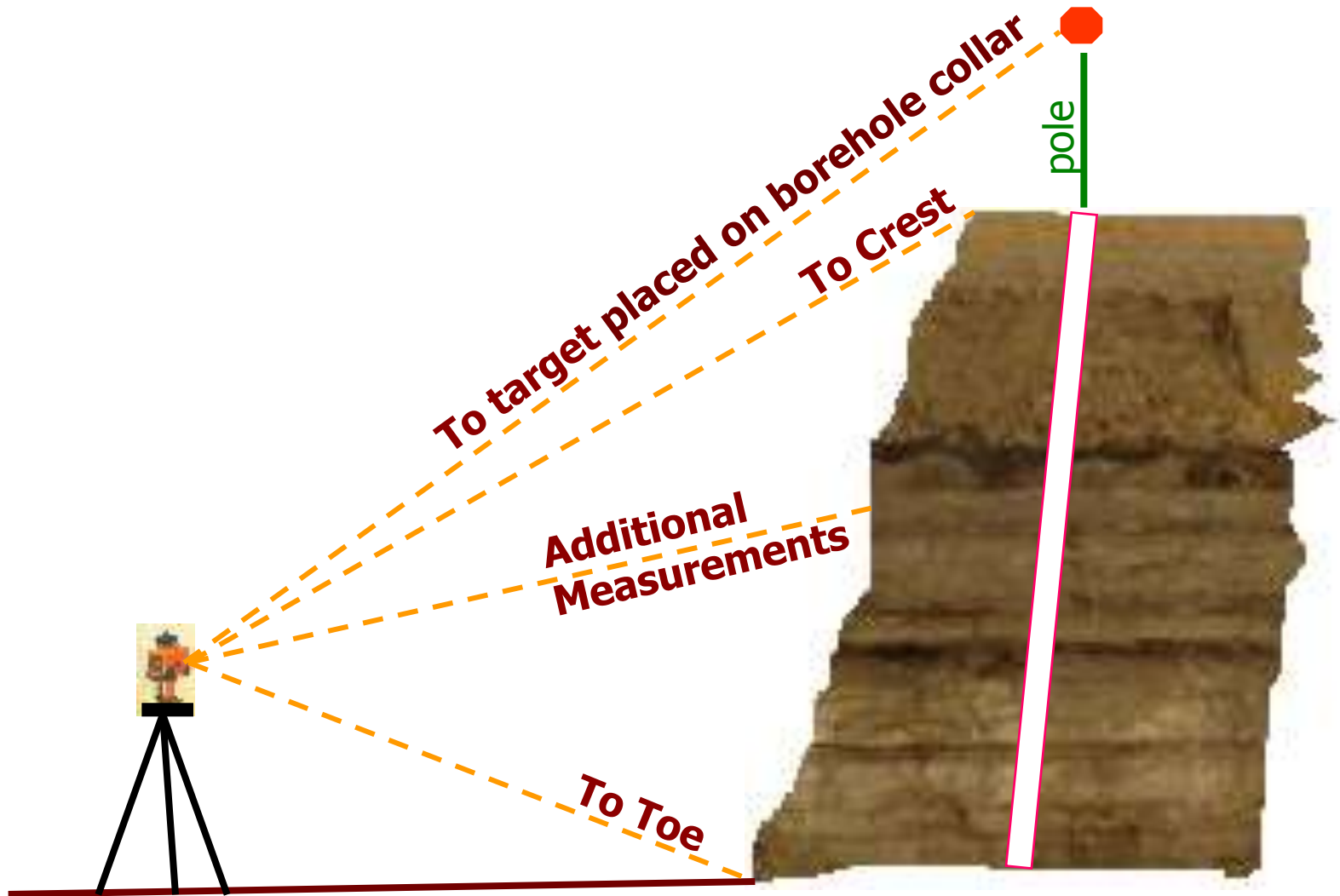
- Supports different lasers:
  - Impulse 200
  - Laser Atlanta
  - Burden Ace 300, Quarryman II
- Automatic conversion between metric and imperial units
- Burden calculation parameters
- Serial Communications parameters (including bluetooth serial ports)

# Creating (Surveying) A New Profile



- Define client
- Define Face and Profile
- Borehole offset
- Borehole Angle
- Stemming
- Sub-Drill

# Typical Measurements to be carried out:



# Shoot CREST Observation...



**Repeat measurement until satisfied. Then press CONTINUE**

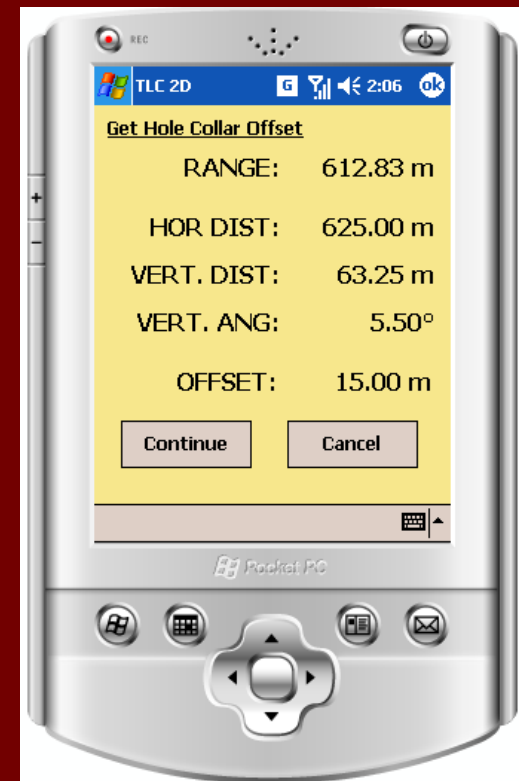
# Shoot TOE Observation...



**Repeat measurement until satisfied. Then press CONTINUE**

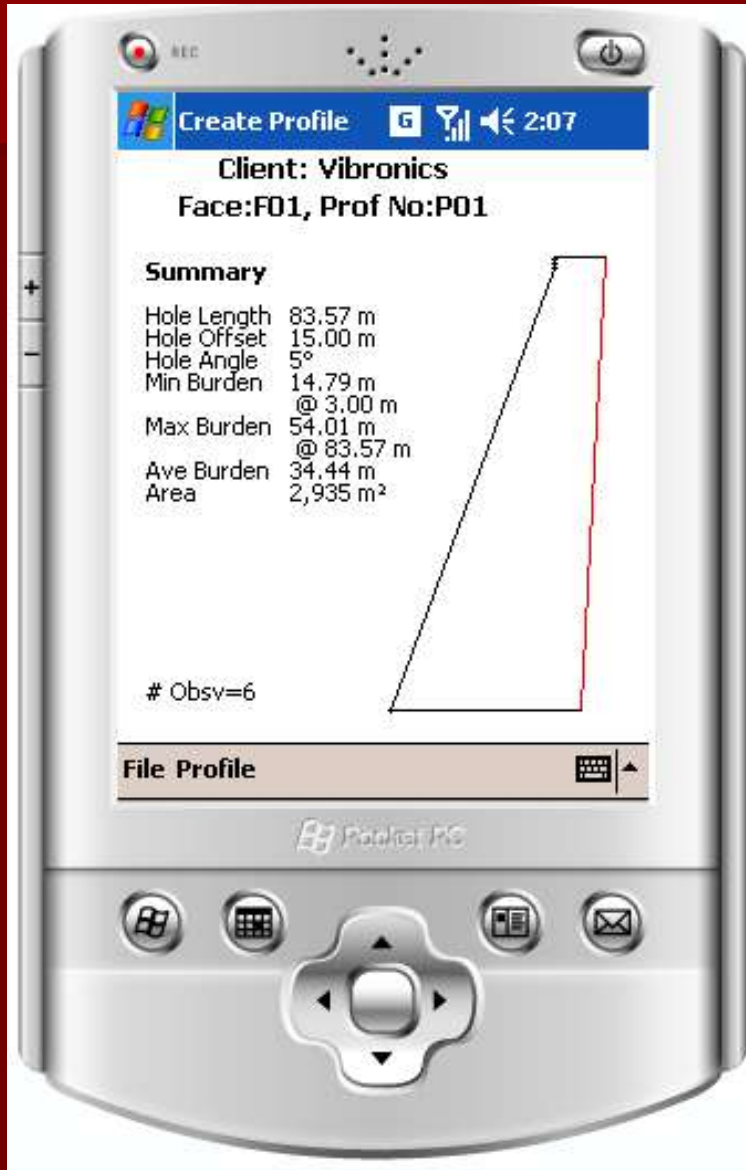
# Shoot Borehole Collar

- This option can be used to determine the position of the borehole on the profile, and thus determine the horizontal collar offset.
- If the user does not want to shoot the borehole collar, just press continue and the value that was entered initially will be used





# Shoot Observations on FACE...



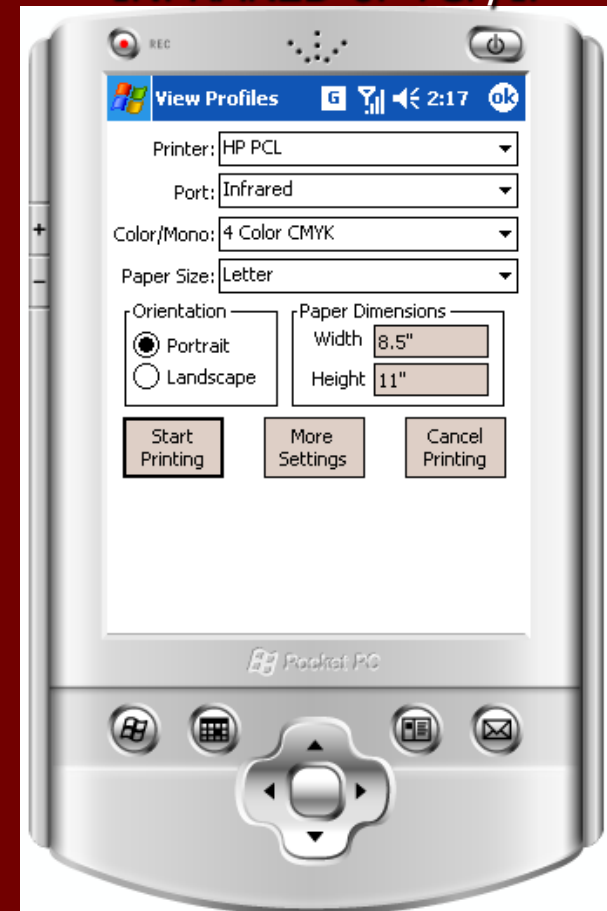
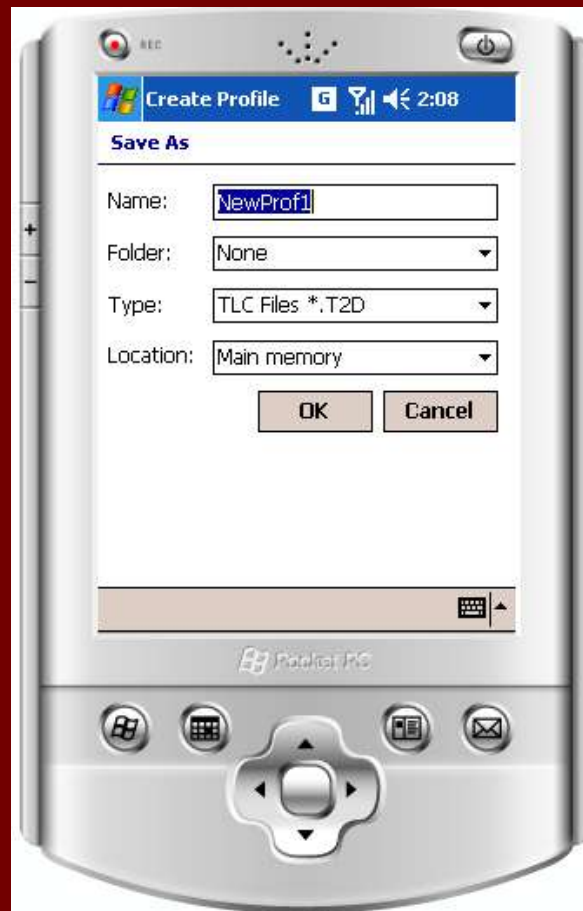
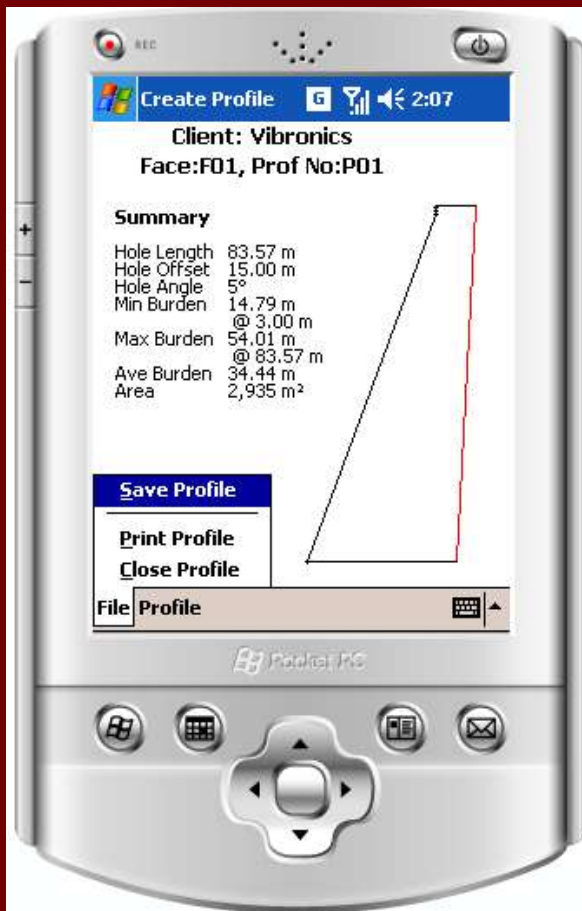
- Data points are automatically sorted according to elevation
- New toe and/or crest values automatically calculated
- Burden data calculated according to burden depth increment
- Profile area calculated

# Options on CREATE function..

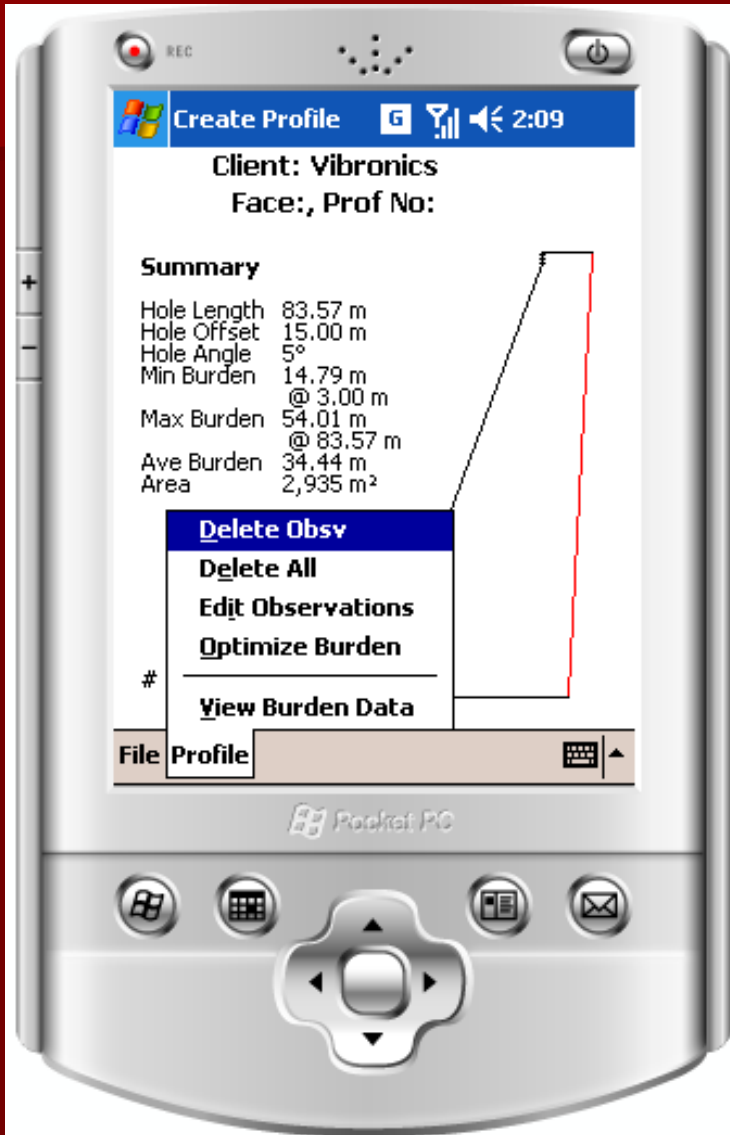
- SAVE PROFILE
- PRINT PROFILE

- Stored as ASCII File with extension \*.T2D

- Printer support via BLUETOOTH, INFRARED or TCP/IP



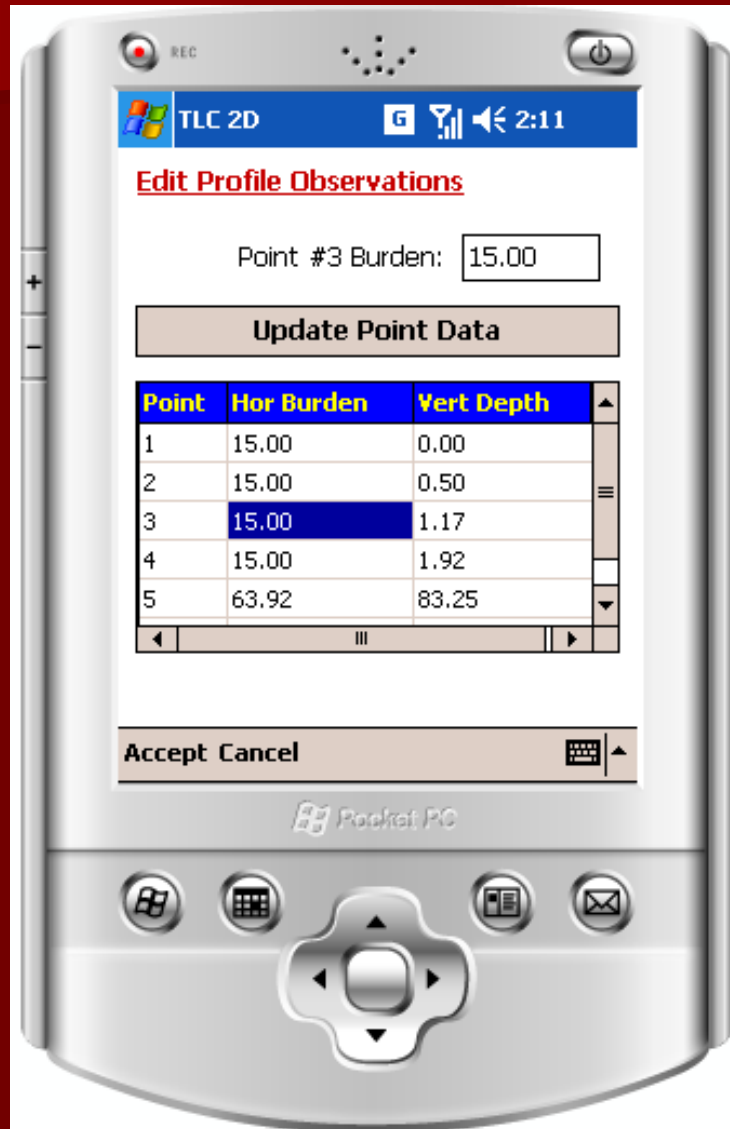
# Options on CREATE function (cont...)



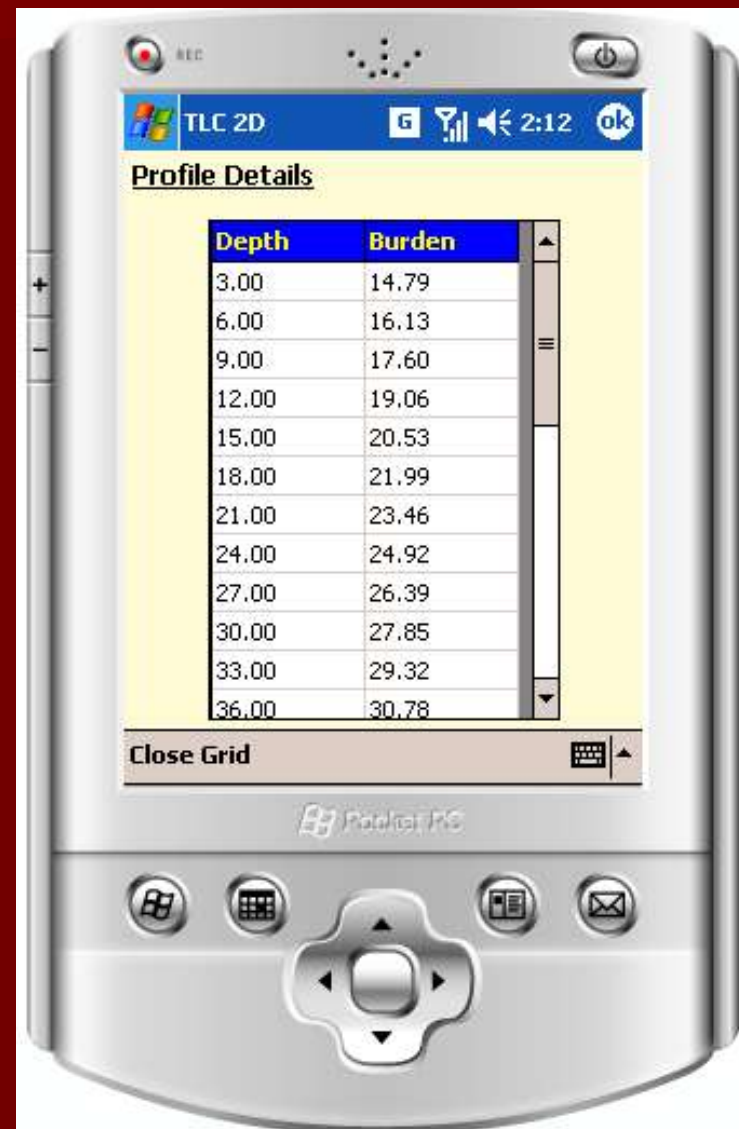
- Delete Observation(s)
- Edit observations
- Optimize burden
- View burden data at specified depths

# Options on CREATE function (cont...)

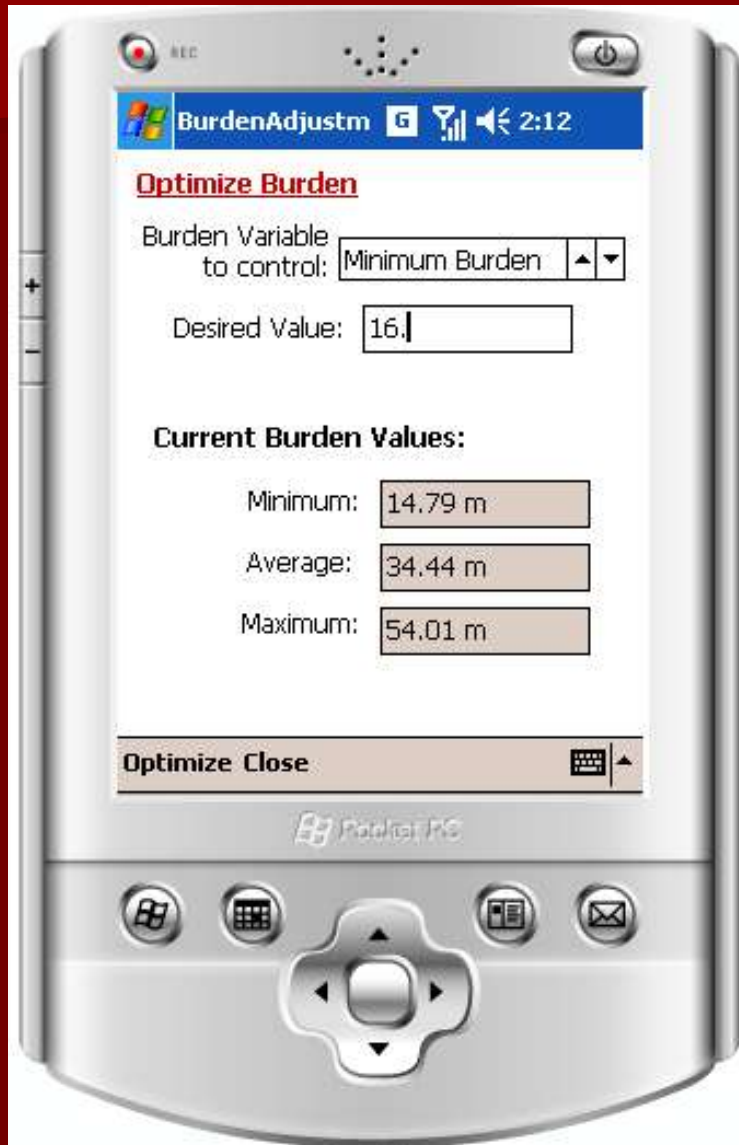
- Edit Observations



- View Burden Table



# Optimize Profile



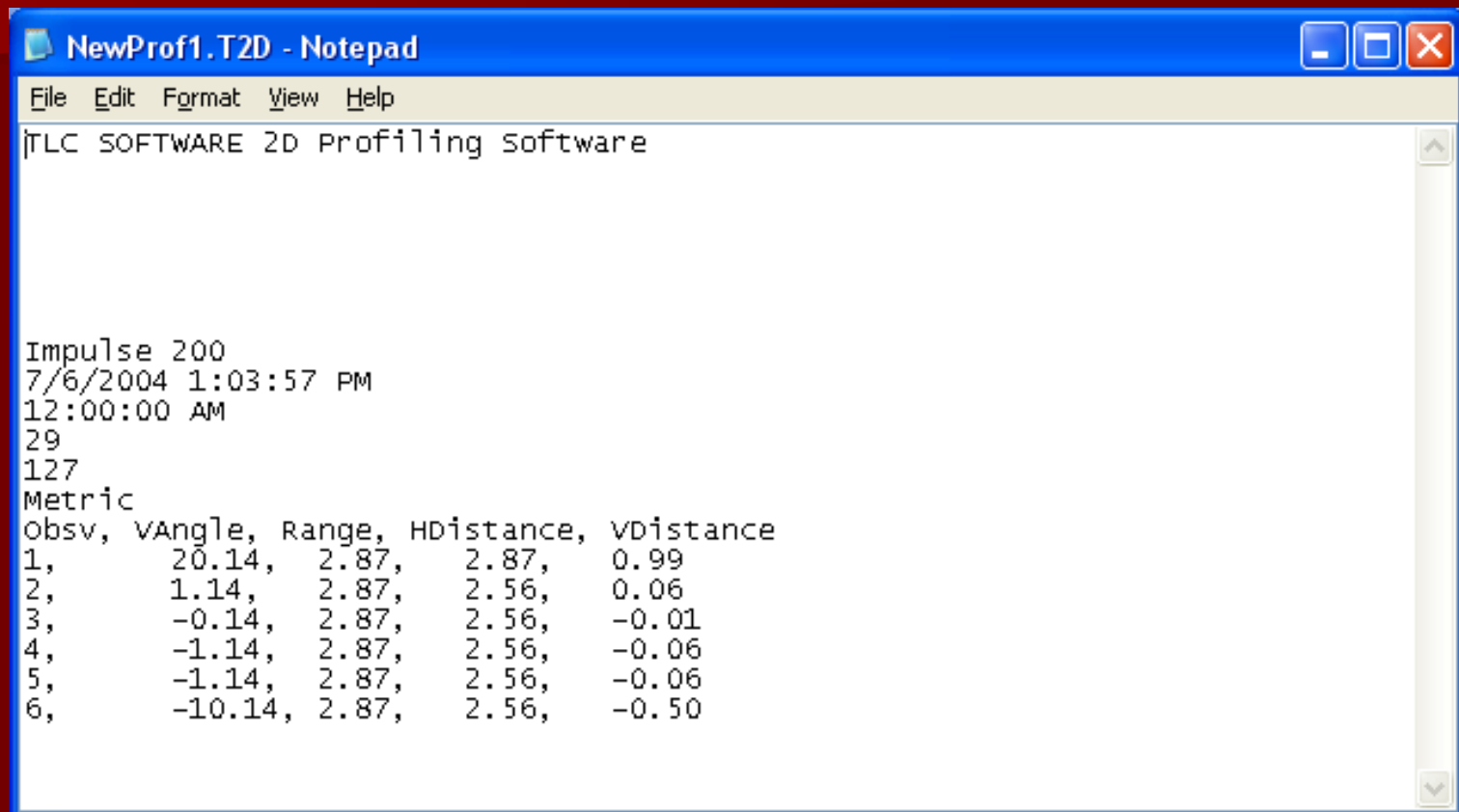
- Calculates position of borehole collar according required parameter:
- Minimum burden
- Average burden
- Maximum burden

# Loading Stored Profiles...



- Profiles are stored with extension (\*.T2D)
- File format is ASCII

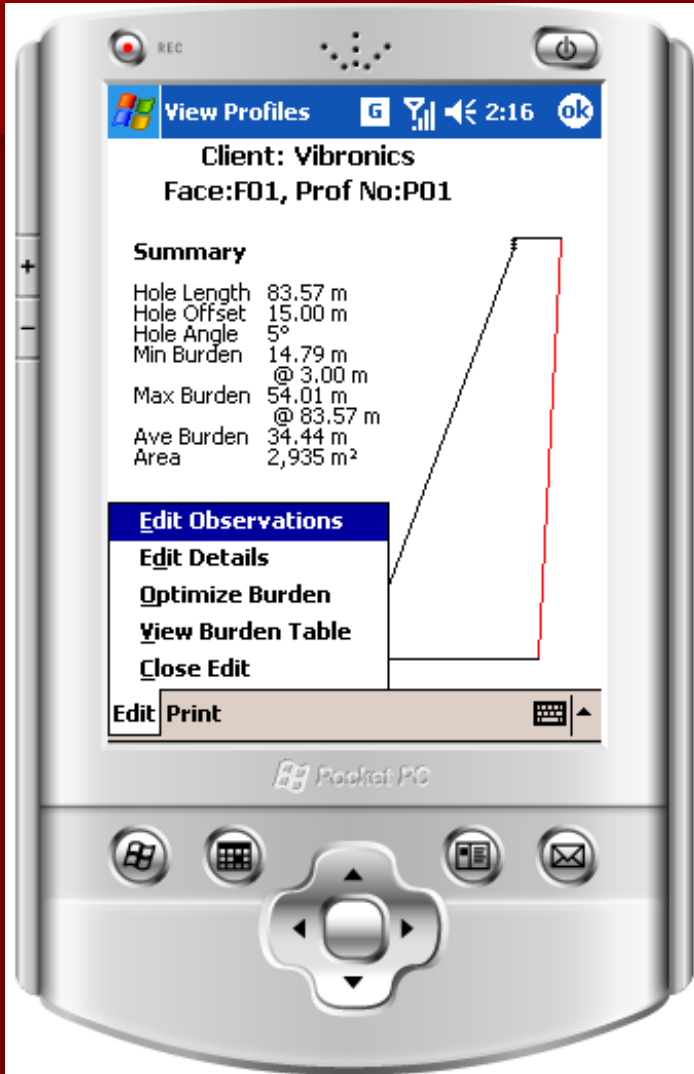
# T2D File Format



```
File Edit Format View Help
|TLC SOFTWARE 2D Profiling software

Impulse 200
7/6/2004 1:03:57 PM
12:00:00 AM
29
127
Metric
Obsv, vAngle, Range, HDistance, VDistance
1, 20.14, 2.87, 2.87, 0.99
2, 1.14, 2.87, 2.56, 0.06
3, -0.14, 2.87, 2.56, -0.01
4, -1.14, 2.87, 2.56, -0.06
5, -1.14, 2.87, 2.56, -0.06
6, -10.14, 2.87, 2.56, -0.50
```

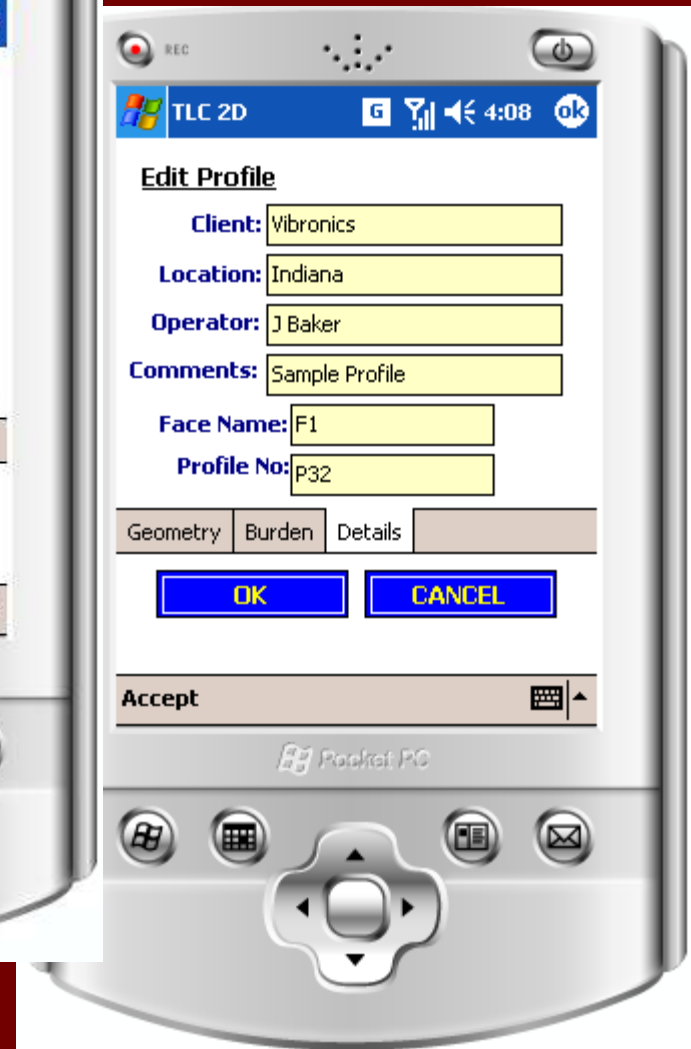
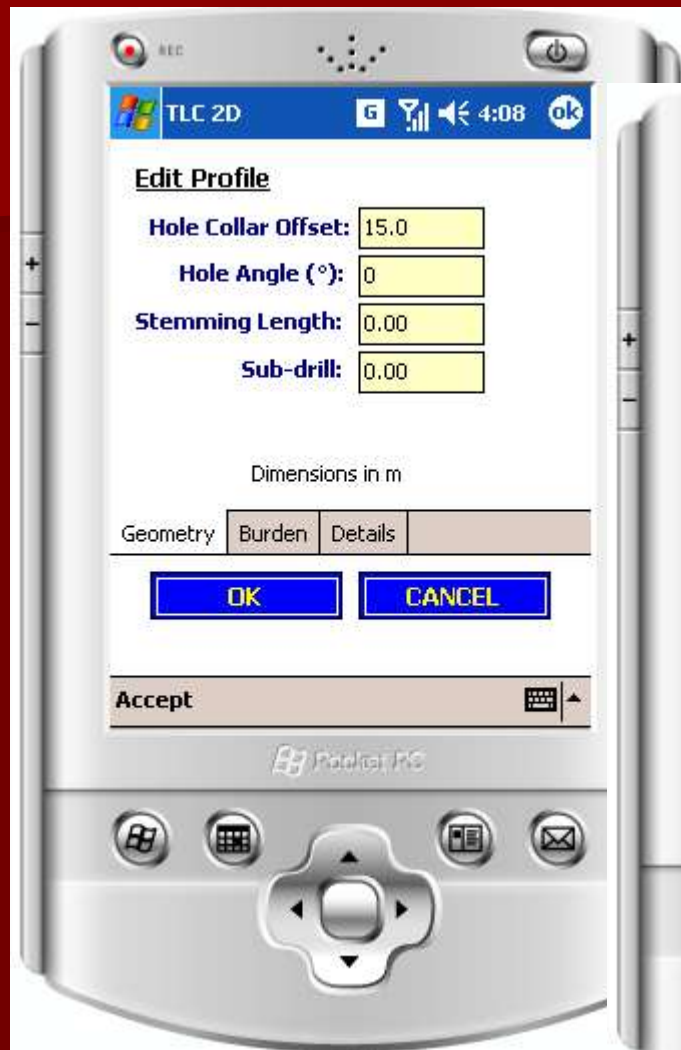
# Viewing Profiles...



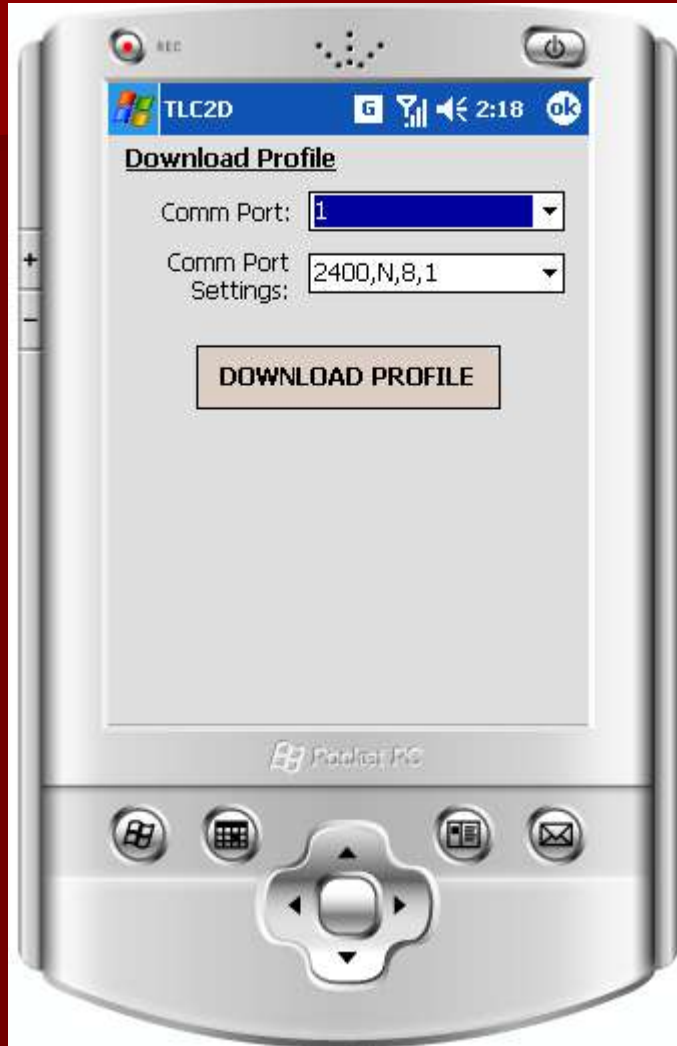
- Edit profile details
- All other features available during the creation process are available from the viewing option.



# Editing Profile Properties...

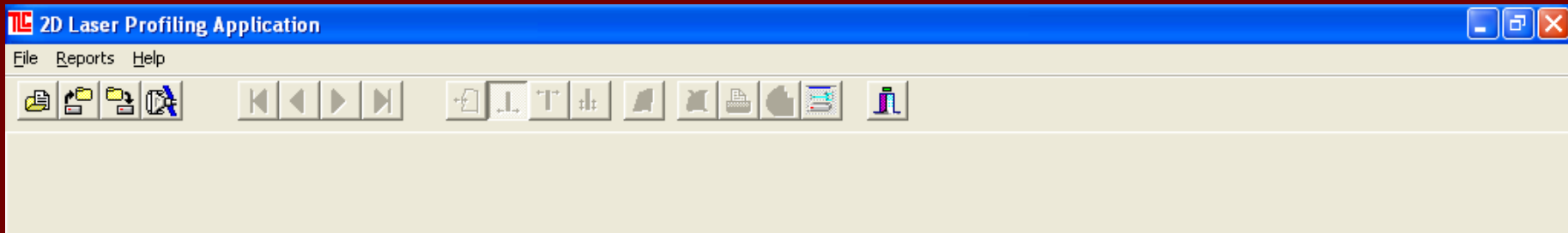


# Downloading Profile to PC...



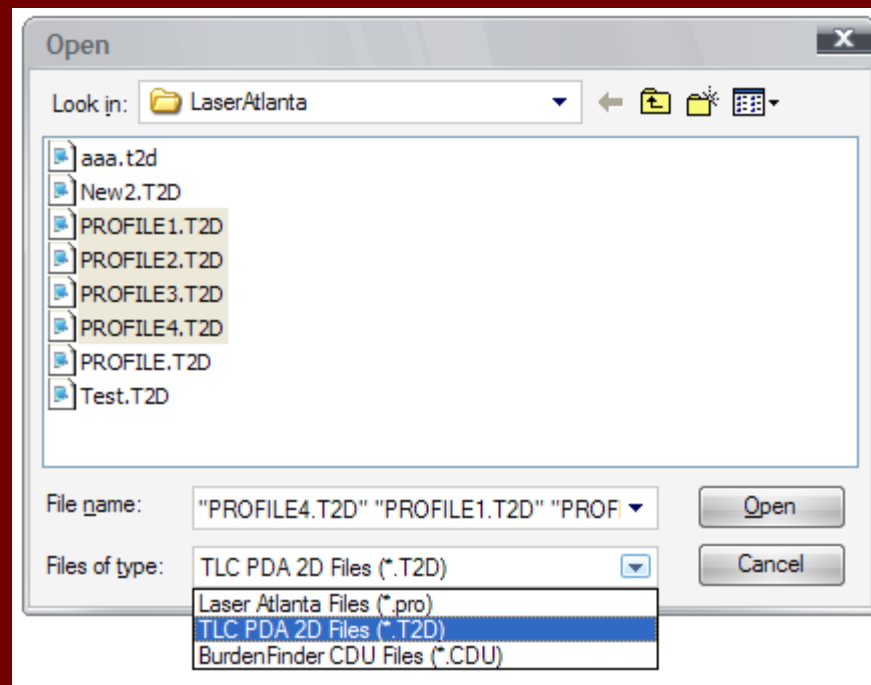
# WINPROF 2D

- Windows based application
- Ability to interface to different lasers and data formats
- Collect profile data for editing, viewing and printing



# WINPROF 2D

- Read files from Laser Atlanta, TLC PDA, MDL BurdenAce, BurdenFinder



# WINPROF 2D – Profile Details

**TLC 2D Laser Profiling Application**

File Reports Help

Data for Profile # 4 out of 4

Profile Details Profile Display Summary Report

Customer	Evergreen Mining	Borehole Collar Offset	0.0	ft
Location	Cowen, WV	Borehole Angle (°)	0.00	°
Date of Survey	03-21-1996 15:22:14	Borehole Depth	44.3	ft
Operator	Jason Ryan	Floor Slope (°)	0.00	°
Comments	Shot to Upper Kattaning	Profile Area	585.7	ft²
Face Name	001	Minimum Burden	2.8	ft
Profile Number	004	Maximum Burden	37.1	ft
Instrument Type	Advantage	Average Burden	15.0	ft

Recalculate

Raw Measurements Table:

Shot #	Vertical Angle (°)	Laser Range (ft)	Horizontal Distance (ft)	Vertical Distance (ft)
0	1.60	587.7	587.4	20.9
1	1.40	584.5	584.3	18.8
2	0.00	580.3	580.3	4.5
3	0.00	580.8	580.8	4.5
4	-0.90	577.1	577.0	-4.6
5	-1.50	570.5	570.3	-10.4
7	-2.90	550.6	549.9	-23.3

Profile Settings

Burden Increment: 2.00 ft

Auto Select Burden Increment

Hole Diameter: 0 in

Stemming: 0.00 ft

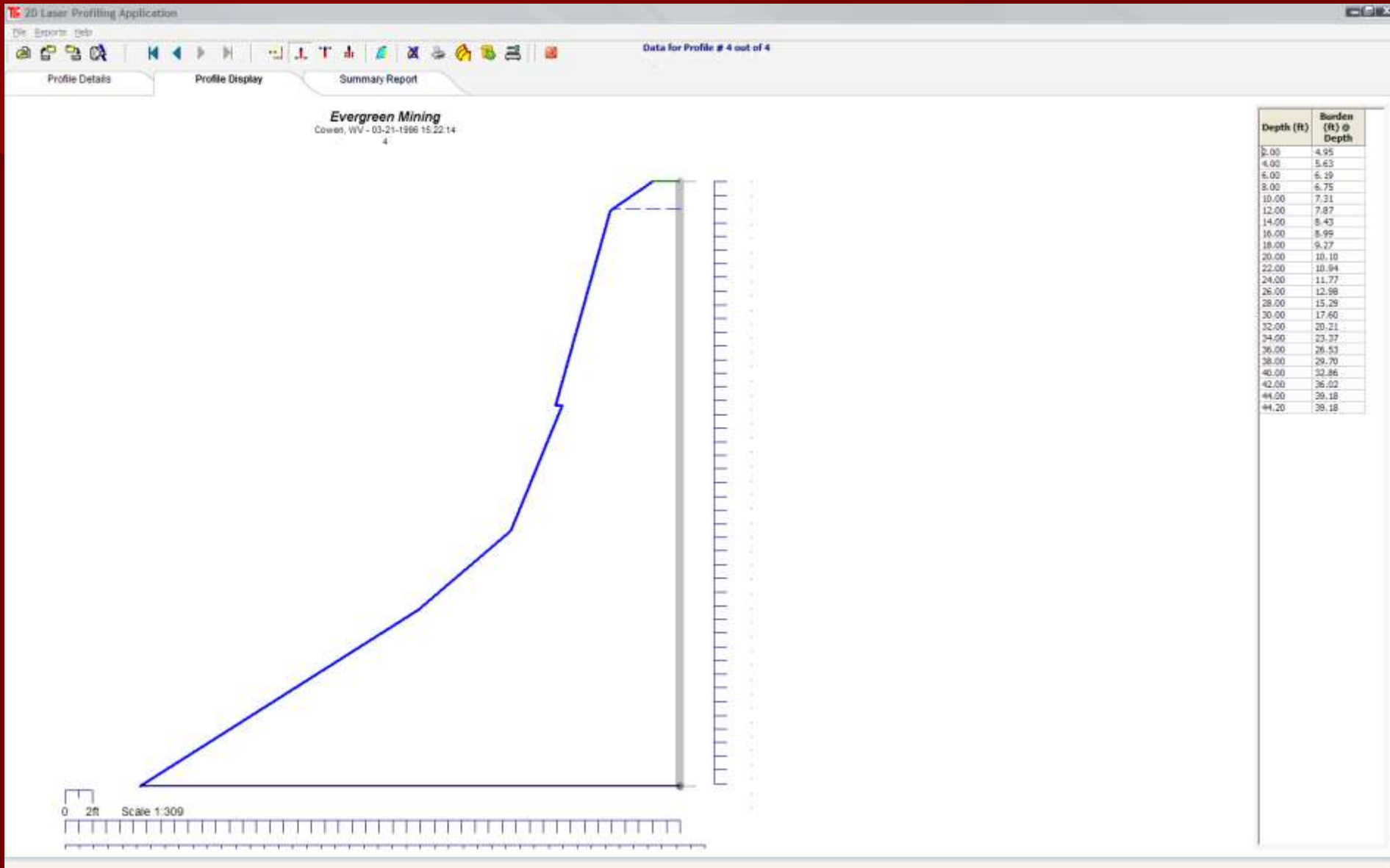
Back Fill: 0.00 ft

Sub-Drill: 0.00 ft

Survey Units

Metric  Imperial

# WINPROF 2D – Profile Display



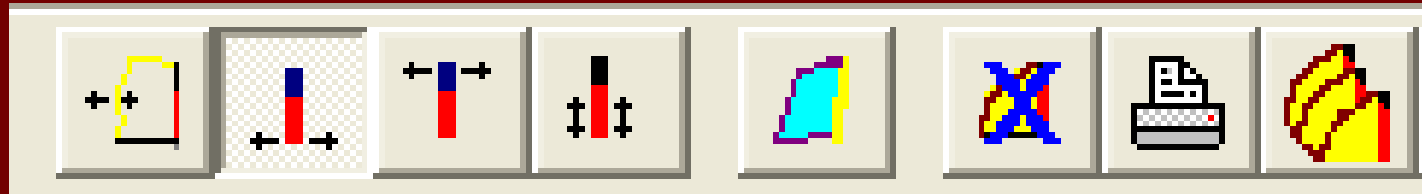
# WINPROF 2D – Profile Editing

- Profile data can be edited directly:

Customer	Evergreen Mining	Borehole Collar Offset	12.0 ft
Location	Cowen, WV	Borehole Angle (°)	28.50 °
Date of Survey	03-21-1996 21:03	Borehole Depth	89.4 ft
Operator	Jason Ryan	Floor Slope (°)	0.00 °
Comments	Shot to Upper Kattaning	Profile Area	997.8 ft <sup>2</sup>
Face Name	001	Minimum Burden	4.1 ft
Profile Number	003	Maximum Burden	18.4 ft
Instrument Type	Advantage	Average Burden	11.2 ft

 Recalculate

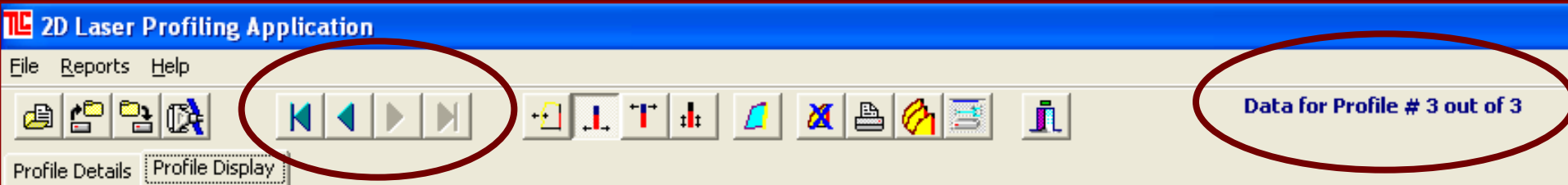
- Graphic tools can be used to modify the borehole position and profile details



# WINPROF 2D

## MULTIPLE PROFILES

- Stores multiple profiles – facilitates grouping of information for a face



- Automatic printing of more than one profile



# Summary Report

TEC 2D Laser Profiling Application

File Reports Help

Data for Profile # 4 out of 4

Profile Details Profile Display **Summary Report**

Profile No	Borehole Depth ft	Borehole Angle °	Offset from Crest ft	Minimum Burden ft	Maximum Burden ft	Average Burden ft	Profile Area ft <sup>2</sup>	Profile Volume
005	46.7	0.0	0.0	0.9	20.4	10.6	480.7	
002	83.3	0.0	0.0	9.6	45.2	33.6	2720.8	
003	89.4	28.5	12.0	4.1	18.4	11.2	997.8	
004	44.3	0.0	0.0	2.8	37.1	15.0	585.7	

# Contact Details:

- **TLC ENGINEERING SOLUTIONS**  
(Johannesburg, South Africa)

- Luis Valentim, Terry Cousins

- [sales@tlc.co.za](mailto:sales@tlc.co.za) or  
[luis@tlc.co.za](mailto:luis@tlc.co.za)

- [www.tlc.co.za](http://www.tlc.co.za)

- Tel: +27 11 4633860



- **Vibronics (Evansville, Indiana, USA)**

- John Wiegand, Jeff Baker

- [sales@vibronics.com](mailto:sales@vibronics.com) or  
[jbaker@vibronics.com](mailto:jbaker@vibronics.com)

- [www.vibronics.com](http://www.vibronics.com)

- Tel: (812) 853 2300

